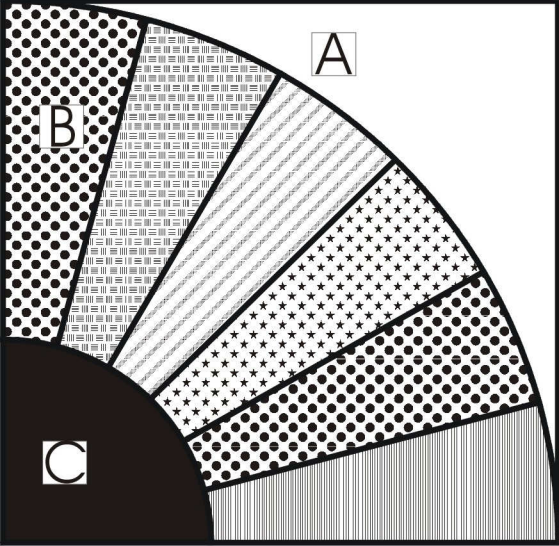


1994 Fantastic Fans



This fan alternated with a pieced block along with some applique for 1994 quilt. It is presented here in three sizes: 12", 9", and a 6" block.

This block is in three sizes, first: 12" finished, 12 1/2" unfinished, second: 9" finished 9 1/2" unfinished, third: 6" finished, 6 1/2" unfinished.

Background

A: Cut 1 [12 1/2", (9 1/2").(6 1/2")] square

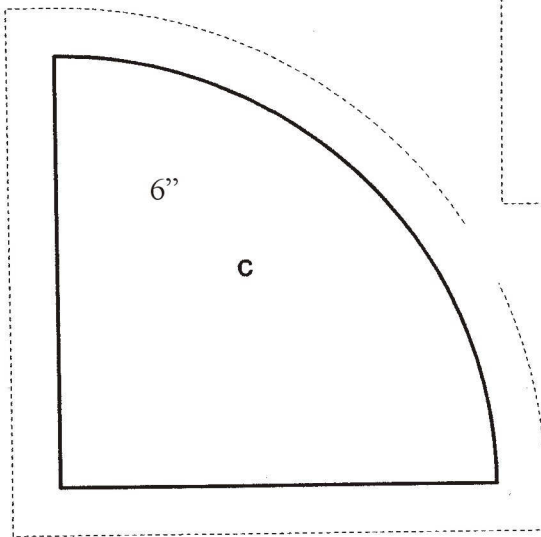
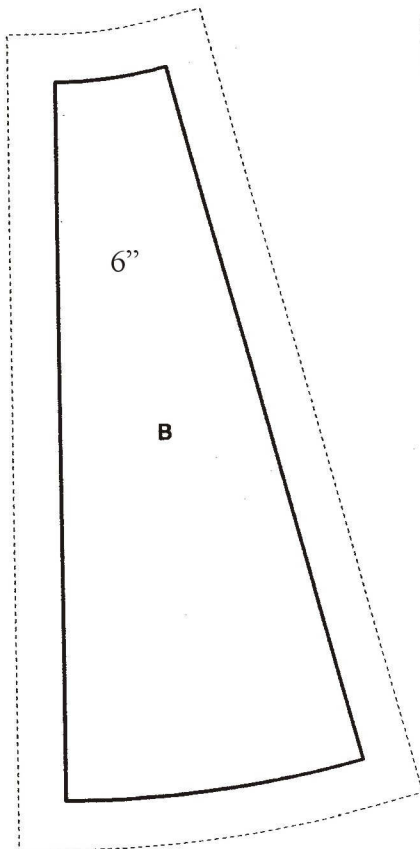
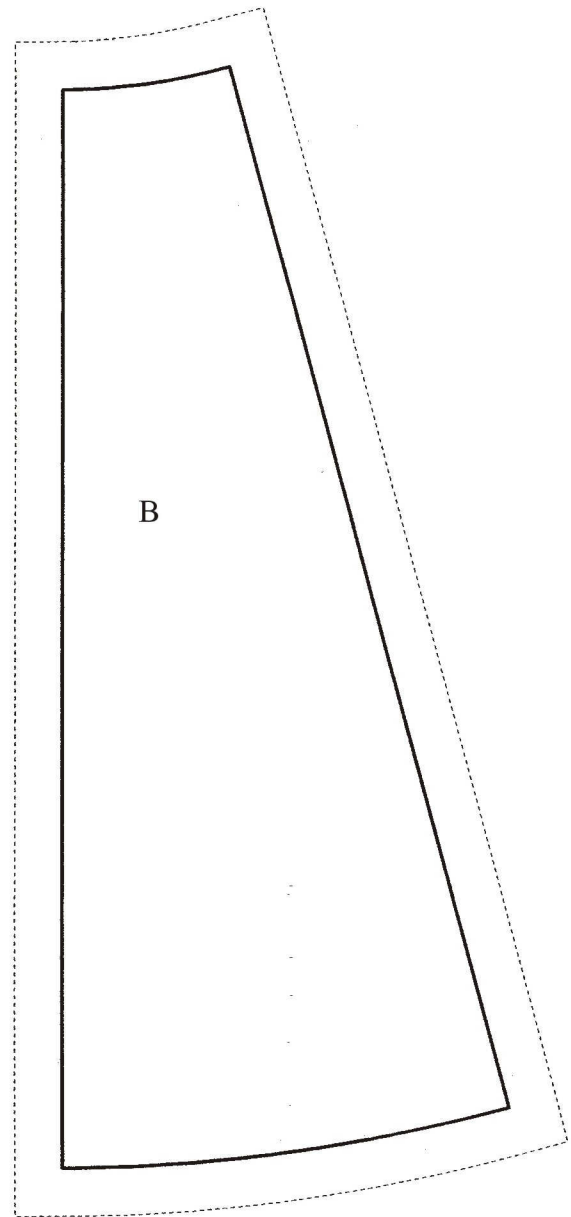
Prints

B: Using the correct template cut 6 blades from a variety of prints.

Fabric #1

C: Cut 1 using the correct template

Make sure that when you print this page you set your scaling option to none in your print window. If you do not do this the templates may not print out to the correct size. You should see a white box besides the words page scaling. Click the down area at the end of this box and choose none.



Sewing Directions:

1. Sew the six blades together to make the fan.
2. On C turn under 1/4" on the curve. Press and then applique it to the blades.
3. On the fan turn under 1/4" on the curve. Press, applique to the background square. Trim excess fabric away from underneath the fan.